

HomeSeer Media Player Plugin



HomeSeer®
HomeSeer Technologies LLC

**109 Powder Hill Rd
Bedford NH, 03110**

www.homeseer.com

TABLE OF CONTENTS

<i>Introduction</i> _____	3
<i>Requirements</i> _____	3
<i>Getting Started</i> _____	3
Installing the Media Player _____	3
New Menus, Devices, and Icons _____	4
Scanning for Music Files _____	4
<i>Using the Media Player</i> _____	5
HomeSeer Web Interface Menu Options _____	5
The Playlist Editor Screen _____	6
The Player Setup Screen _____	8
The Status Screen _____	11
Loop and Shuffle Modes _____	12
<i>Automating the Media Player</i> _____	13
Controlling the Media Player with Events _____	13
Controlling the Media Player with Custom Scripts _____	15
<i>Voice Commands for the Media Player</i> _____	19
To play music from a specific album _____	19
To play music from a specific artist _____	19
To play music from a specific genre _____	20
To play music from a specific playlist _____	20
To control the media player _____	21
<i>Support</i> _____	24

Introduction

Thank you for the purchase of the HomeSeer Media Player Plugin! The HomeSeer Media Player gives you total voice and automation control of your digital music.

Requirements

There are several requirements to using the HomeSeer Media Player:

- HomeSeer Version 2.0.0 or higher must be installed.
- Windows® Media Player 9 or higher must be installed.
- The digital music to be controlled with the HomeSeer Media Player must be stored on the HomeSeer computer or on one or more computers or storage devices connected to the HomeSeer computer via a network.

Getting Started

Installing the Media Player

1. To install the Media Player plug-in for HomeSeer version 2.x, select the "Updater" button on the web interface, or select "Updates" from the "Help" menu. Follow the on-screen instructions for the Updater.
2. Select the Media Player plug-in on the package selection screen, then follow the on-screen instructions to finish the update process, and restart HomeSeer.
3. After restarting HomeSeer, click the "Setup" tab and then the "Interfaces" tab on the web site. Click "Enable" to enable the plugin, and then click "Save" at the bottom of the screen.
4. To use the *Media Player*, you must first **register** the plug-in. There are two methods of registration, depending upon the information that you have been provided from the time of purchase.
 - a. Click "Unregistered" or "Trial" button on the line containing the Media Player Plug-in to register. This will display the Registration Screen.

HomeSeer Technologies

- b. Enter your License ID and Password included in this case. Click the "Register" button. If you have any technical difficulties, see the Support section of this manual and open a ticket at or help desk.

New Menus, Devices, and Icons

After the HomeSeer Media Player is installed and activated, new menu options will appear in the HomeSeer Windows screen, the HomeSeer Web interface, and the HomeSeer TouchPad interface (which includes an interface for Pocket PCs). The Web and TouchPad screens may need to be refreshed or the web browser shut down and restarted in order for the new menu options to appear.

The menu options are described in the *Using the Media Player* section (see page 5).

New devices are also added to the system. These devices appear when you click on "Devices" in the HomeSeer Windows screen and the "Status" link in the HomeSeer Web interface. These devices are not visible in the TouchPad or Pocket PC interfaces.

Scanning for Music Files

Before any music can be used in the HomeSeer Media Player, it must first be added to the Windows® Media Player's "Media Library". To do so, open the Windows Media Player main screen. This can be done by going to `START > PROGRAMS > ACCESSORIES > ENTERTAINMENT > WINDOWS MEDIA PLAYER`. (The location may differ slightly, depending on the operating system being used.)

In the Windows Media Player screen, select the option to search the computer for music. This can be done from the `TOOLS` menu, by clicking the `ADD` icon in the Media Player skin, or by pressing the `F3` key. The *Add to Media Library by Searching Computer* screen will appear. Specify in this screen the location where the music files are stored and then click the `SEARCH` button. You may need to repeat this step if music files are stored on multiple computers or external

HomeSeer Technologies

storage drives. This step will also need to be repeated when new music files are added to the system.

Be aware that unless HomeSeer is restarted, you may have to choose the various "Refresh" options in the HomeSeer Web interface *Status* screen (see page 11) to view the new selections that were added to the lists by the scan operation.

Using the Media Player

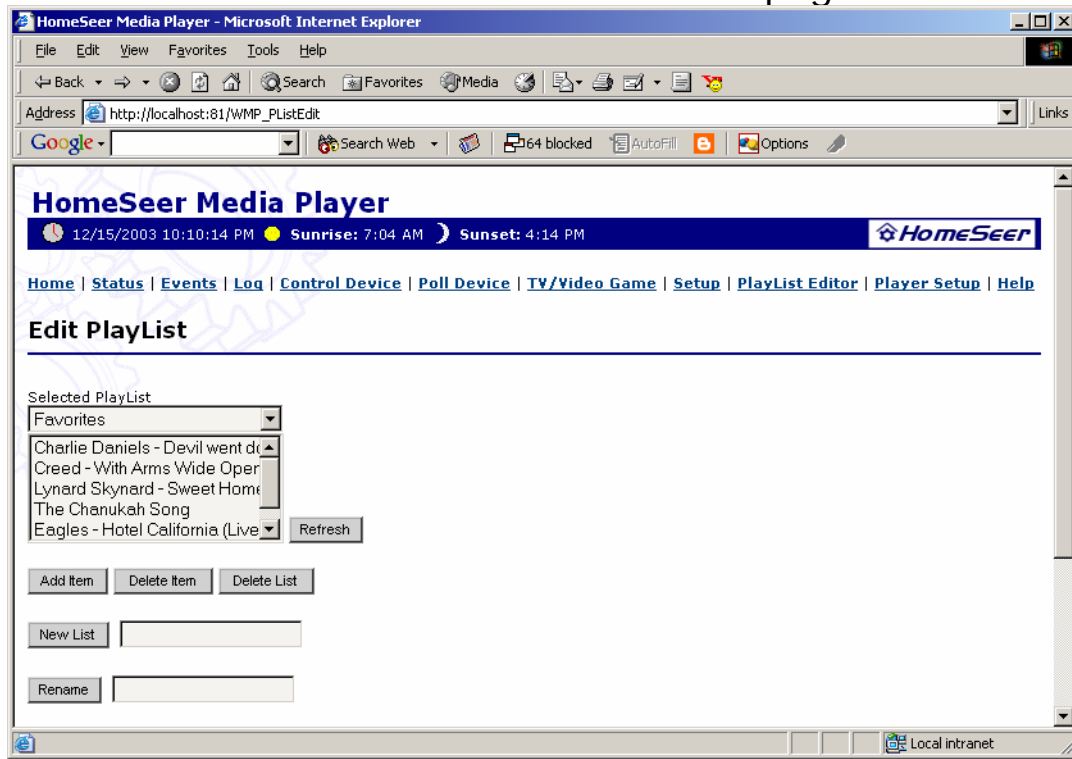
HomeSeer Web Interface Menu Options

When the HomeSeer Media Player is installed, two new navigational links are added to the HomeSeer Web browser screens: *PlayList Editor* and *Player Setup*.

The menu options may not appear automatically in the HomeSeer Web interface if the user has modified those screens. To manually add those options to a user-defined HTML page, create custom buttons or links that point to http://hostname:port/WMP_PListEdit (*PlayList Editor*) and http://hostname:port/WMP_Setup (*Player Setup*). For example, http://localhost:81/WMP_Setup and http://localhost:81/WMP_PListEdit. (If HomeSeer's web server was configured with the default port number of 80 then it's not necessary to specify a port number – 80 is the port that the web browser will use by default.)

The Playlist Editor Screen

Click this link to go to the *Edit Playlist* screen. The buttons and fields of this screen are described on the next page.



Selected Playlist

Select from the drop-down list the playlist to be modified. The songs already included in that playlist will appear in the list below.

Refresh

Click this button to refresh the list of songs in the selected playlist. Clicking this button may be necessary if songs were added to this playlist from another screen within the Windows Media Player or the HomeSeer Media Player.

Add Item

Click this button to add a song to the selected playlist. The *Add to Playlist* screen will appear (shown at right). Navigate to the song to be added to the playlist by selecting options in the drop-down boxes. For example, selecting "Album" in the *Add From* field will show a list of albums in the *Albums* field. Select an album in that list to view the songs on that album in the *Title* field. After selecting a song, click **ADD ITEM** to add that item to the selected playlist.

Add to PlayList

Add to PlayList

Favorites

Add from

Album

Albums

A Kind Of Magic

Title

Princes Of The Universe

Refresh Add Item Return

Delete Item

In the *Edit Playlist* screen, select a song in the list then click this button. Confirmation of the deletion will appear just above the *Selected Playlist* field. Deleting a song from a playlist does not delete it from the computer, just from that playlist.

Delete List

Click this button to delete the playlist shown in the *Selected Playlist* field. Deleting a playlist deletes just that playlist – the songs in that playlist are not deleted.

There is no confirmation before deleting an item or a list. Deleting an item or list is permanent and can't be undone.

New List

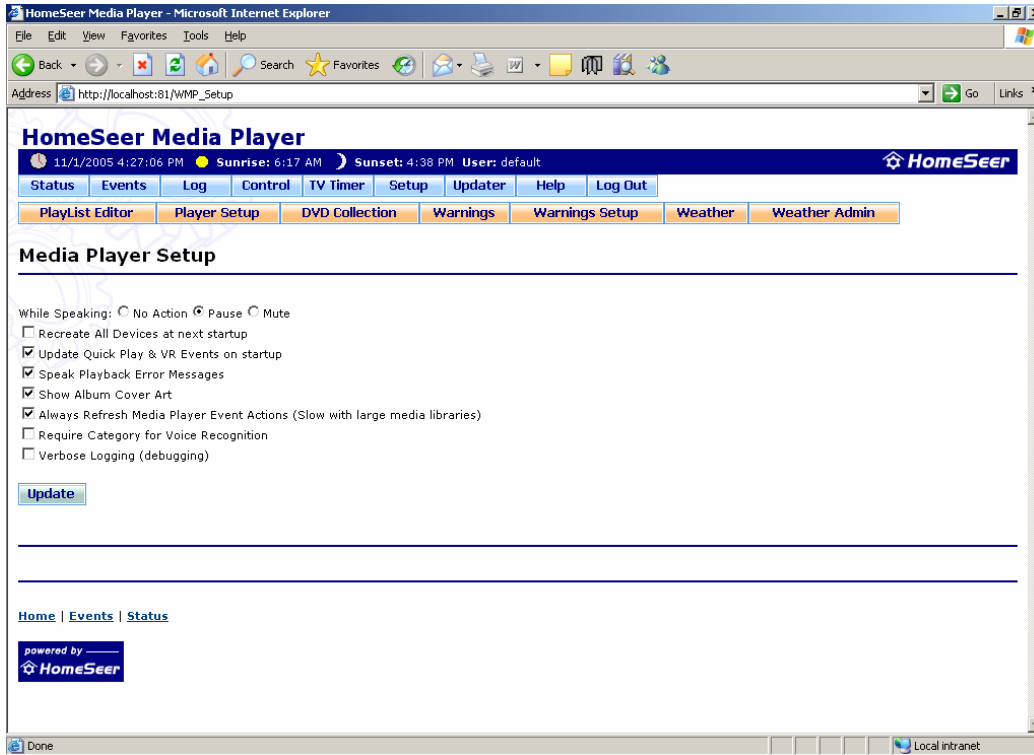
Type a name for the playlist in the field at right then click this button to create the playlist. To add music to this new playlist, click **ADD ITEM**. The *Add to Playlist* screen will appear (see above).

Rename

Select a playlist from the *Selected Playlist* field. Type a name in the field at right then click this button to rename the playlist.

The Player Setup Screen

Click this link to go to the *Player Setup* screen. The buttons and fields of this screen are described below.



While Speaking...

Specify what you want HomeSeer to do to the Media Player when HomeSeer is speaking. The options are to have HomeSeer do nothing (*No Action*), to *pause* the Media Player, or to *mute* it. If *No Action* is selected the music will continue to play while HomeSeer speaks, so you hear both the music and HomeSeer at the same time. If *Pause* or *Mute* are selected, then music will begin playing or will again be heard once HomeSeer stops speaking. By default this option is set to *Pause*.

Recreate All Devices at next startup

Enable this option to have HomeSeer delete and recreate all devices that relate to the Media Player. This option is generally only required if one or more devices were corrupted or deleted by accident. This option is disabled by default.

Update Quick Play & VR Events on startup

Enable this option to have the voice commands and drop-down lists in the HomeSeer Windows screen (under the "Status" link – see page 11) update automatically when HomeSeer starts up. If this option is not enabled then the "Refresh" option in each drop-down list will need to be selected manually. Please note that enabling this option on systems with large media libraries will slow down the HomeSeer start-up process. For instance, if a song is deleted but a playlist that's set to play that song is still set to play that song, then when the playlist gets to that song HomeSeer will announce that it couldn't find it (HomeSeer will then automatically advance to the next song and play it). Disable this option to have HomeSeer skip that type of announcement. This option is enabled by default.

Speak Playback Error Messages

Enable this option to have HomeSeer announce errors within the HomeSeer Media Player when they occur. This option is enabled by default.

Show Album Cover Art

Enable this option to view the cover art for albums in the HomeSeer Web, TouchPad, and Pocket PC screens. The cover art will also appear in the *HS Media Player* screen, if enabled (see page **Error! Bookmark not defined.**). Cover art is only shown if that cover art is included in the ID3v2 tag of the music file, was previously downloaded by the Windows Media Player, or is available online at the time the music starts playing. This option is enabled by default.

Always Refresh Media Player Event Actions

Enable this option to have HomeSeer go through the media library in order to populate the drop-down lists in the *Media Player Actions* screen (see page 13). This will be done every time you open a HomeSeer event's properties. This option may take some time with large media libraries. If disabled, the *Actions* screen won't be refreshed unless the event actually contains a Media Player action. This option is enabled by default.

HomeSeer Technologies

Require Category for Voice Recognition

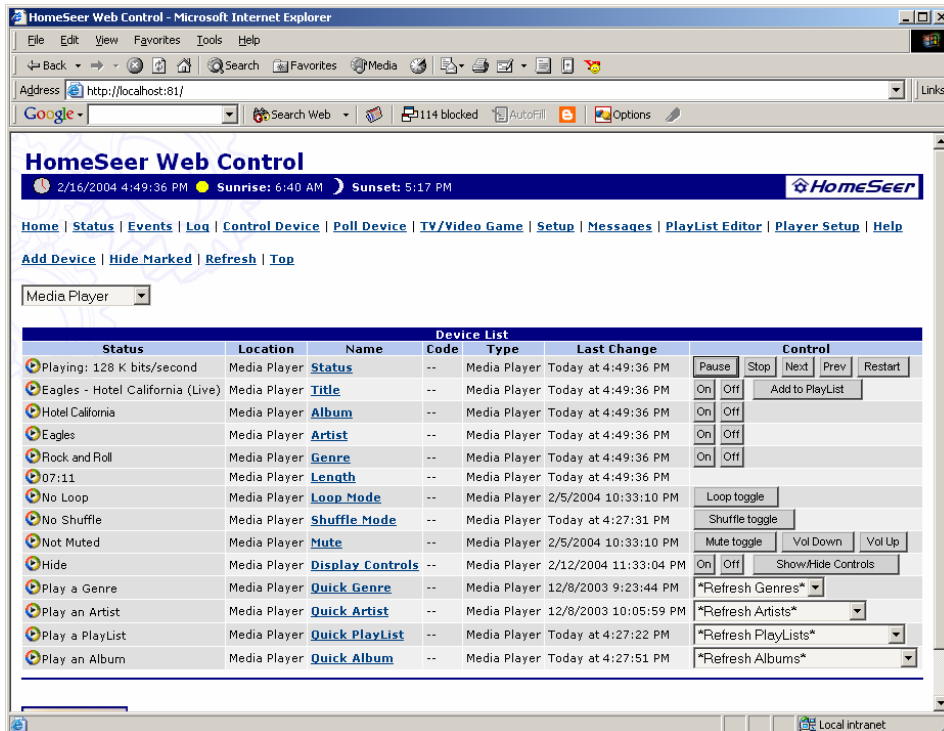
Enable this option to require category identification when controlling the Media Player by voice. Enabling this option helps to differentiate between artists and albums with the same name. For example, just saying "Play *Train*" could play either the songs from the album *Train* or all the songs by the artist "Train". Enabling this option would require you to say "Play album *Train*" and "Play artist *Train*" instead of just "Play *Train*". See *Voice Commands for the Media Player* on page 19 for other examples and the complete list of voice commands. This option is disabled by default.

Verbose Logging

Enable this option to have debugging messages for the Media Player added to the HomeSeer log file. This option is disabled by default.

The Status Screen

The *Status* page of the HomeSeer Web interface shows the current status of all devices in HomeSeer. The devices that were created automatically when the Media Player was installed and activated will be shown when the location drop-down box is set to "All Locations" or "Media Player". The screen below shows the *Status* screen with the location set to "Media Player".



The *Status* screen shows the current status of the Media Player. For instance, as shown in the screen above, the Media Player is playing the song "Hotel California" from the Eagles' *Hotel California* album.

In addition to showing the status of the Media Player, the *Status* screen also gives you control over the Media Player. You can pause, stop, or restart the player, advance to the next or previous song in a playlist, turn the Loop or Shuffle modes on or off (see page 12), adjust the volume or mute the player, or view or hide the *HS Media Player* screen (see page **Error! Bookmark not defined.**). The *Status* page also has Quick Play devices.

Quick Play Devices

The “Quick Play” devices are visible in the *Home* and *Status* pages of the HomeSeer Web interface when the location field in those screens is set to “All Locations” or “Media Player”. The Quick Play devices are four drop-down boxes and are populated with the list of artists, albums, genres, and playlists in the system. The Quick Play devices will automatically load and begin playing whichever playlist is selected from one of the drop-down boxes.

The first item in each drop-down box will refresh the list of items in that list. For instance, clicking REFRESH ALBUMS will force the HomeSeer Media Player to repopulate the list with all of the albums known to the Media Player. Use the refresh options after scanning new music and/or creating new playlists in the HomeSeer or Windows Media Players. The option to automatically refresh these lists on startup can be enabled in the *Player Setup* screen (see page **Error! Bookmark not defined.**).

Loop and Shuffle Modes

There are two “modes” for the HomeSeer Media Player. One, both, or neither of the modes can be enabled at any time. These modes can be enabled and disabled from the *HS Media Player* screen (see page **Error! Bookmark not defined.**), from the *Home* or *Status* areas of the Web interface (when “Media Player” or “All Locations” is selected as the location – see page 11), in an event (see page 13), or by voice (see page 19).

The Loop Mode

When the Loop mode is enabled, music from whichever playlist is loaded will play over and over again until stopped or a different playlist is loaded or the Loop mode is disabled. When this mode is disabled the playlist will play through once. The order the songs will be played in depends on whether the Shuffle mode is enabled or disabled.

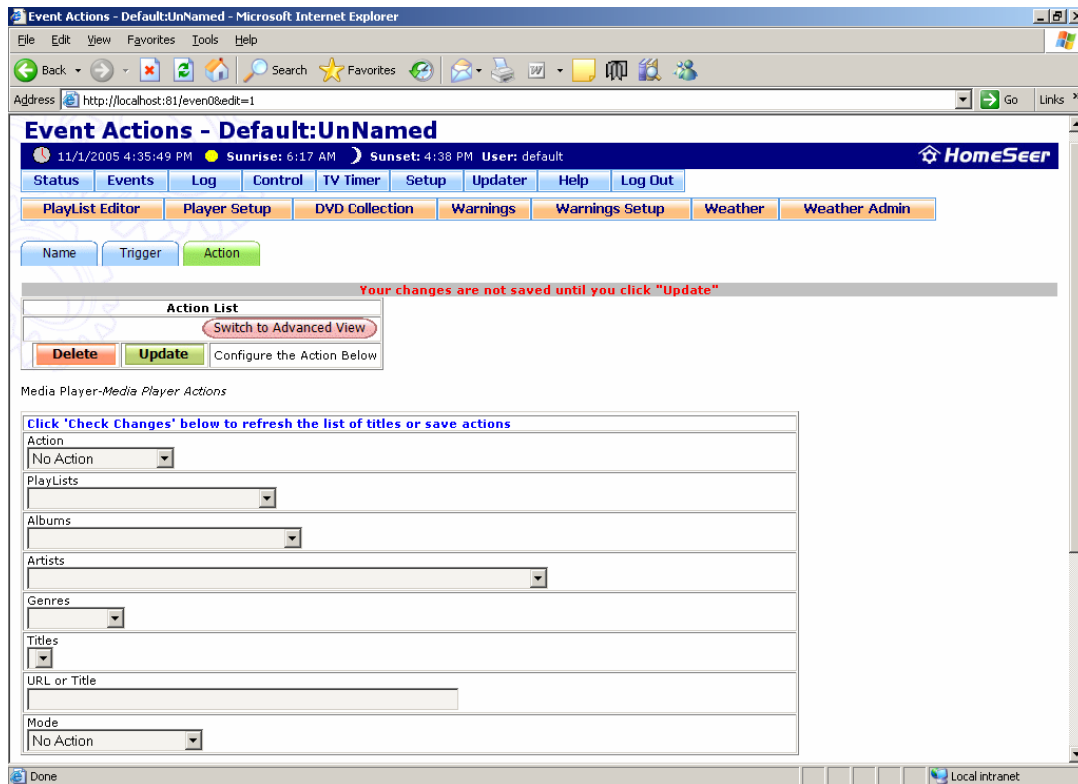
The *Shuffle* Mode

When the Shuffle mode is enabled, music from whichever playlist is loaded will play in a random order. When this mode is disabled the music will play in the order that the songs are listed in the playlist.

AUTOMATING THE MEDIA PLAYER

Controlling the Media Player with Events

When the HomeSeer Media Player plug-in was installed and activated, a new action was added to the *Event Actions* list in the HomeSeer event properties web page (shown below) and a new link was added to the *Events* page of the HomeSeer Web interface. Click on either the *Media Player Actions* tab in the *Event Properties* screen or the *Media Player Actions* link in the *Events* page to view the list of actions available for controlling the Media Player.



Select from the drop-down *Action* list the action you want to occur. You can choose to load a user-created playlist or music from a specific artist, album, genre, media library, or website (URL). Actions are also

HomeSeer Technologies

available for controlling the Media Player itself, such as stopping, pausing, muting, etc.

To Play a Specific Song or PlayList

Select one of the *Play:* options in the *Actions* list. After selecting an album in the *Album* field, click the CHECK CHANGES button (not shown) to have the list of songs in that album added to the *Titles* field. Select from the *Titles* field whether the entire list of songs should be played or just a specific song in that list. At the same time as playing a song or list, you can put the Media Player into a specific mode by selecting it from the *Mode* drop-down field. Once all the options in this screen are set, click UPDATE to finish setting up the action for this event.

If *Play:Media Library* is selected, then the only field that can be modified is the *URL or Title* field. Type the title of the song to be played. The title must be typed **exactly** as it appears in the media library.

To Play Music from a Website

Select *Play:URL* from the *Action* list then type the URL for the website into the *URL or Title* field. Selecting an option from the *Mode* field will have no affect on music played from the website, but it will put the HomeSeer Media Player into the mode selected. Click UPDATE to finish setting up the action for this event.

To Control the Media Player

Select one of the player controls from the *Action* list, such as "Stop", "Pause", "Next", etc. At the same time you can put the Media Player into a specific mode by selecting it from the *Mode* drop-down field. Once all the options in this screen are set, click UPDATE to finish setting up the action for this event.

To Set the Media Player Mode

In the *Action* list is an option to *Change Mode only*. Select this option if you don't want to load and play a song or playlist but do want to change the mode of the Media Player. Select the mode from

the *Mode* field then click UPDATE to finish setting up the action for this event.

Controlling the Media Player with Custom Scripts

Custom scripts can be used for more advanced control of the Media Player. HomeSeer reads the scripts from an external file and acts on the commands in the file. Files with custom scripting should be saved to the "Scripts" folder in the HomeSeer program folder (the default location is C:\Program Files\HomeSeer\Scripts). Only advanced users who have a complete understanding of custom scripting should use this method to control the Media Player. See the main HomeSeer Help for more information on using custom scripts.

The Media Player scripting functions are accessed through the object:

```
hs.GetPlugins("Media Player").scripting
```

For example, the code to play a song would look something like this:

```
Set hspiWMP=hs.GetPlugins("Media Player").scripting  
hspiWMP.play "Album", "Greatest Hits", "The best song"
```

In the following list of functions, the choices for "CategoryType" are *Album*, *Artist*, *Genre*, *Playlist*, or *Media Library*. When *Media Library* is used the "Category Name" field is ignored.

Media Player Functions for Custom Scripts

- Function Play(CategoryType as String, CategoryName as String, Optional Title as String="") as Long
- Function PlayURL(URL as String) as Long
- Function GetCategoryList(CategoryType as String) as Collection
Function GetByCategory(Optional

HomeSeer Technologies

CategoryType as String="Media Library", Optional
CategoryName as String="") as Collection

- Function AddToPlaylist(Optional Reserved1 as String,
Optional Reserved2 as String, Optional Reserved3 as
String="", Optional sPlaylistName as String="HomeSeer")
Adds the song that's currently playing to the playlist.
- Function CurrentPlaylist()
MsgBox "The current playlist is: " & hspiWMP.CurrentPlaylist
- Function GetMediaInfo(CategoryType as String,
CategoryName as String, Title as String) as Collection
*Set hspiMediaInfo=hspiWMP.GetMediaInfo("Artist", "Janet",
"Best Song")
MsgBox "Album=" & hspiMediaInfo("Album") & vbCrLf _
& "Artist=" & hspiMediaInfo("Artist") & vbCrLf _
& "Genre=" & hspiMediaInfo("Genre") & vbCrLf _
& "Duration=" & hspiMediaInfo("Duration")*
- Property Mute() as Boolean
MsgBox "Player is muted: " & hspiWMP.Mute
- Property Let Mute(State)
*hspiWMP.Mute=true
hspiWMP.Mute="toggle"*
- Property Get LoopMode()
MsgBox "Loop Mode is: " & hspiWMP.LoopMode
- Property Let LoopMode(State)
*hspiWMP.LoopMode=true
hspiWMP.LoopMode="toggle"*
- Property Get ShuffleMode()
MsgBox "Shuffle Mode is: " & hspiWMP.ShuffleMode
- Property Let ShuffleMode(State)
hspiWMP.ShuffleMode=true

hspiWMP.ShuffleMode="toggle"

- Property Let Volume(Percent as Integer)
hspiWMP.Volume=50
- Property Get Volume() as Integer
MsgBox "Volume is: " & hspiWMP.Volume
- Property Get PlayerStatus() as String
- Property Get Title() as String
- Property Get Artist() as String
- Property Get Album() as String
- Property Get Genre() as String
- Property Get Length() as String
- Property Get ShowPopupControls()
MsgBox "Pop-up controls are displayed: " & hspiWMP.ShowPopupControls
- Property Let ShowPopupControls(State)
hspiWMP.ShowPopupControls=true
hspiWMP.ShowPopupControls="toggle"
- Property Let FullScreenVideo(State)
hspiWMP.FullScreenVideo=true
hspiWMP.FullScreenVideo="toggle"
- Property Get WMPObject() as Object
This gives full access to the Windows Media Player object. This object is available as a convenience to extremely advanced developers only. Because of its complexity, technical support for this object is not available. More information about the object can be found at http://msdn.microsoft.com/library/en-us/dnwmnt/html/wmplayer_9_sdk_intro.asp.
- Sub PausePlayer()
- Sub ResumePlayer()
- Sub StopPlayer()

HomeSeer Technologies

- Sub PlayNext()
- Sub PlayPrev()
- Sub Restart()
- Sub FastForward()
- Sub FastReverse()
- Sub Eject(Optional Drive as Integer=0)
- Sub VolumeUp(Optional Percent as Integer=10)
- Sub VolumeDown(Optional Percent as Integer=10)

- Sub RefreshLists(CategoryType as String)
hspiWMP.RefreshLists "Artist"

VOICE COMMANDS FOR THE MEDIA PLAYER

Use the commands below to play music or control the music player. See the main HomeSeer Help for information on getting HomeSeer's attention so that you can talk to it.

Commands with an asterisk (*) after them are the only commands that will be recognized if the "Require Category for Voice Recognition" option in the *Media Player Settings* screen is enabled (see page **Error! Bookmark not defined.**). If that option is not enabled then all voice commands will be recognized.

To play music from a specific album

Use the commands below to load music from the specified album into the Media Player. The Media Player will play every song in the playlist until stopped or another playlist is loaded. The order the songs will be played in is determined by the order of songs in the playlist. The Media Player will turn off *Shuffle* mode if it was on.

Commands:

Play [album name].
Play album [album name].*

Examples:

Play A Kind of Magic.
Play album Classic Queen.*
Play The Dance.

To play music from a specific artist

Use the commands below to load music from the specified artist into the Media Player. The Media Player will play every song in the playlist until stopped or another playlist is loaded. The songs will be played in a random order. The Media Player will switch to *Shuffle* mode if it was off.

Commands:

Play [artist name].
Play artist [artist name].*

Examples:

Play artist Genesis.
Play Fleetwood Mac.
Play Enya.

To play music from a specific genre

Use the commands below to load music from the specified genre into the Media Player. The Media Player will play every song in the playlist until stopped or another playlist is loaded. The songs will be played in a random order. The Media Player will switch to *Shuffle* mode if it was off.

Commands:

Play [genre name].
Play genre [genre name].*

Examples:

Play genre Soundtrack.
Play genre Classical.
Play Rock and Roll.

To play music from a specific playlist

Use the commands below to load music from the specified playlist into the Media Player. The Media Player will play every song in the playlist until stopped or another playlist is loaded. The order the songs will be played in is determined by the order of songs in the playlist. The Media Player will turn off *Shuffle* mode if it was on.

Commands:

Play [playlist name].

Play playlist [playlist name].*

Examples:

Play playlist Favorites.*

Play playlist Party Music.*

Play Dinner Party.

To control the media player

Use the commands below to control playback of – and settings for – the Media Player.

In the commands below, “Play” or “Player” both refer to the Media Player and can be used interchangeably.

To stop the music:

Play stop.

Player stop.

To pause the music:

Play pause.

Player pause.

To resume playback:

Play resume.

Player resume.

To restart the Media Player:

Play restart.

Player restart.

To advance to the next song in the playlist:

Play next.

Player next.

To go to the previous song in the playlist:

Play previous.

Player previous.

To mute the music or unmute the Media Player:

Play mute.

Player mute.

Play unmute.

Player unmute.

To raise or lower the volume:

Play volume up.

Player volume up.

Play volume down.

Player volume down.

(Volume is raised or lowered in 10% increments.)

To turn on a Media Player mode:

Play shuffle.

Player shuffle.

Play loop.

Player loop.

To turn off a Media Player mode:

Play no shuffle.

Player no shuffle.

Play no loop.

Player no loop.

To eject a CD from the CD-ROM:

Play eject.

Player eject.

To show or hide the *HS Media Player* screen (see page **Error! Bookmark not defined.**):

Play display controls.

Player display controls.

Play no display controls.

Player no display controls.

To add a song to the HomeSeer playlist:

HomeSeer Technologies

Play add to playlist.

Player add to playlist.

These commands are an easy way to create a custom playlist on the fly. When one of the commands above is said, the song that's currently loaded is added to a system-created playlist called *HomeSeer*. The *HomeSeer* playlist can then be renamed to something else, such as "Favorites" or "Wake Up Music".

Legal Notices:

HomeSeer® is a registered trademark of HomeSeer Technologies, LLC.

Microsoft®, Windows®, and Windows Media® are registered trademarks of Microsoft Corporation.

All rights reserved. Copyright ©2002-2007 HomeSeer Technologies LLC.

Support

For support:

Help Desk: www.homeseer.com (select **HelpDesk** from the **Support** menu)

Support is also available on our message board at:

<http://board.homeseer.com>

Look for the forum dedicated to the Media Player plug-in.